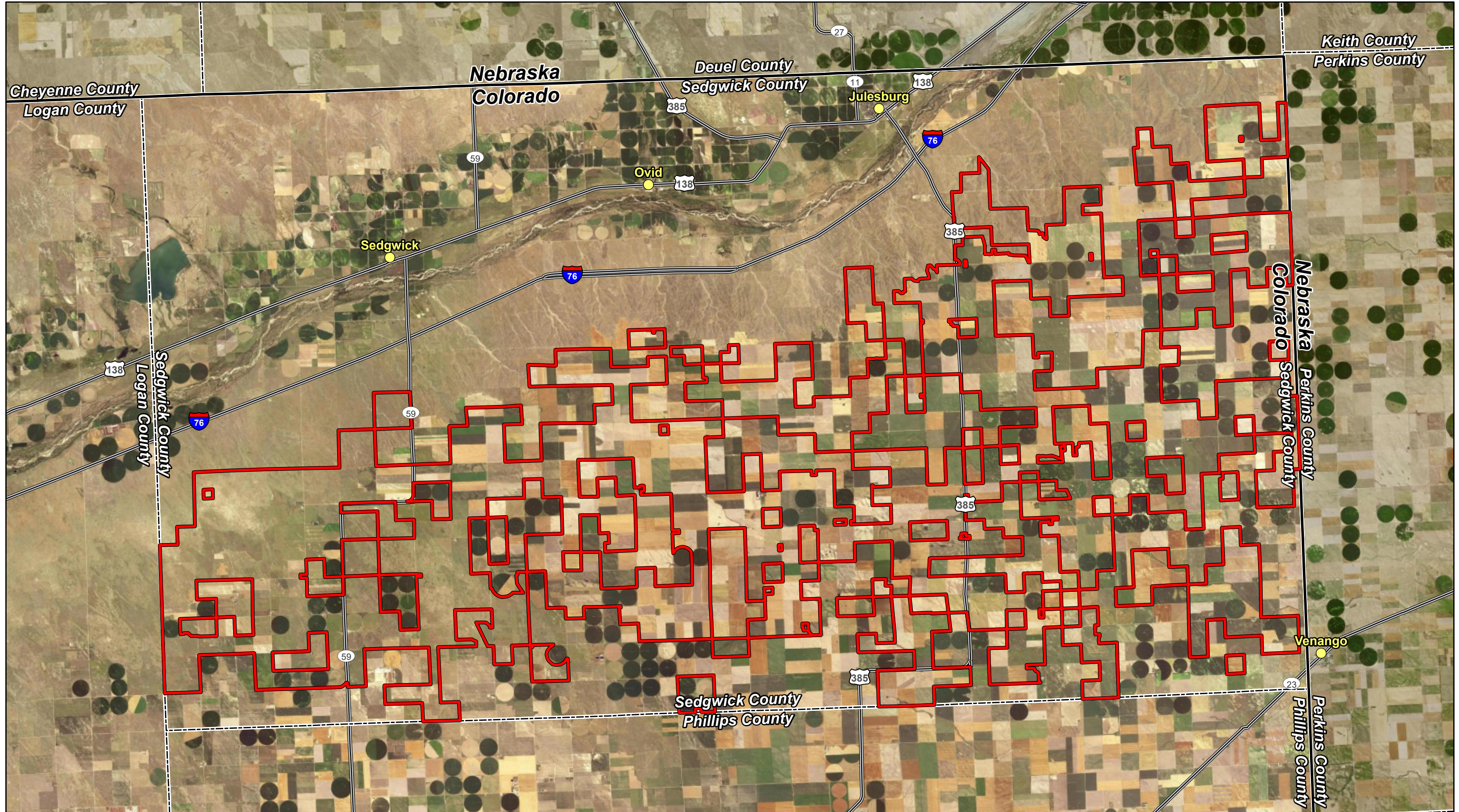
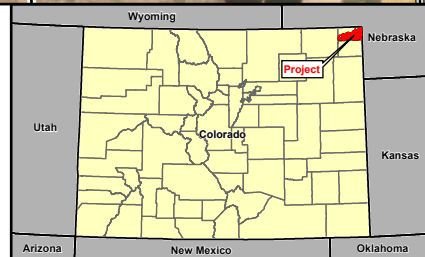


Attachment 2.04

Administrative Boundaries (Location Map 1)



Data Source(s): Westwood (2024); ESRI WMS NAIP Imagery Basemap (Accessed 2024); Census Bureau (2021); Sedgwick County, Colorado (2023).



Legend

- Site Boundary
- County Boundary
- State Boundary
- Town/Village
- Major Road



Overland Pass Energy East Wind Project

Sedgwick County, Colorado

Location Map

Map Document: N:\0034226_00_GIS_ArcPro\0034226_040_Section2\locationMaps_23022010\0034226_040_Section2\locationMaps_230614.aprx 6/27/2024 1:36 PM rdevito