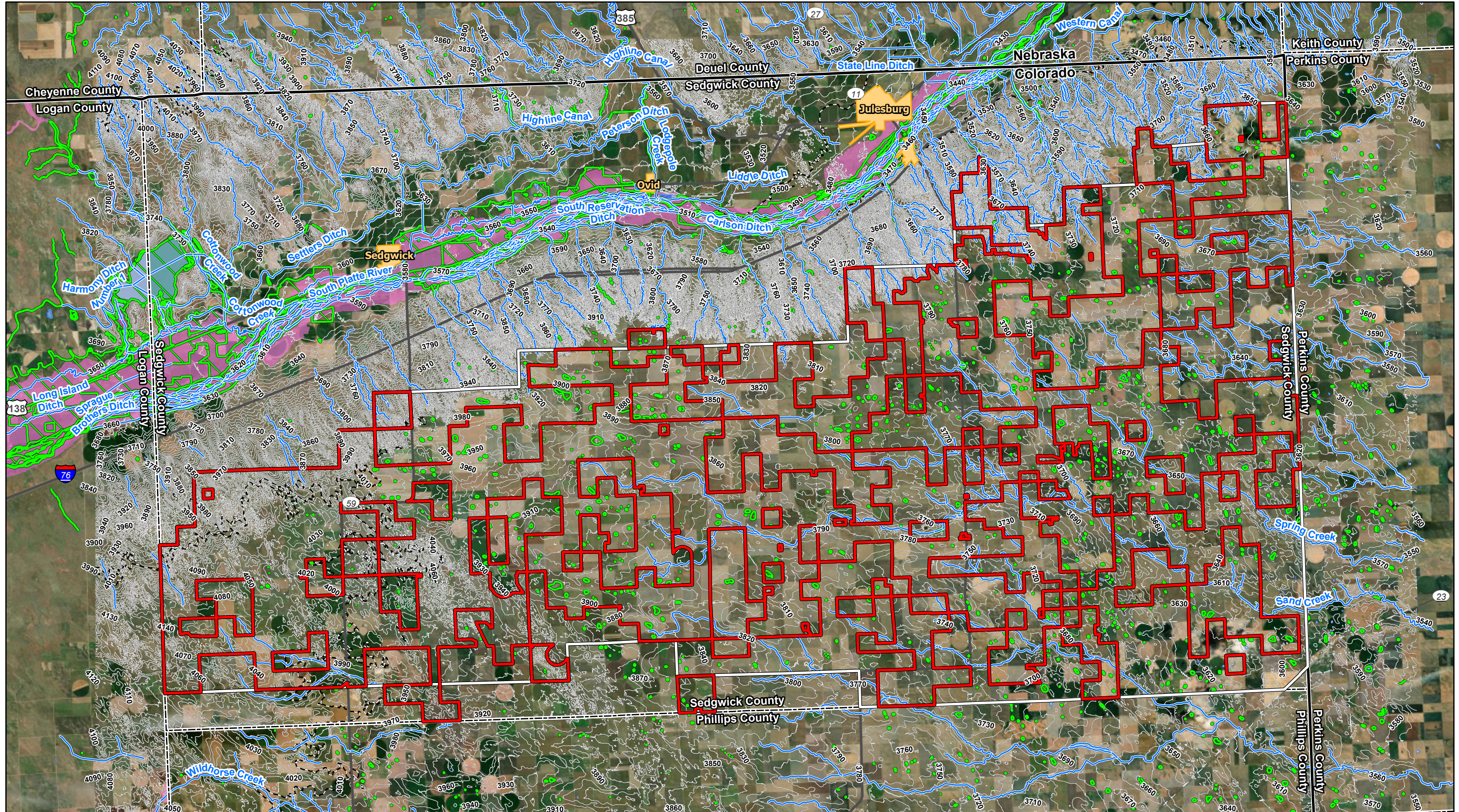


Attachment 5.02

Water Resources Overview and Map Series



Data Source(s): Westwood (2024); ESRI WMS World Imagery Basemap (Accessed 2024); USGS 3DEP (2023), NWI (2022), NHD (2022), FEMA (2022).

Legend

- Site Boundary
- Municipal Boundary
- NHD Flowline
- 100-Year FEMA Floodplain
- Studied Area
- Major Road
- NHD Waterbody
- 50 ft Contour
- County Boundary
- State Boundary
- NWI Wetland
- 10 ft Contour

Overland Pass Energy East Wind Project

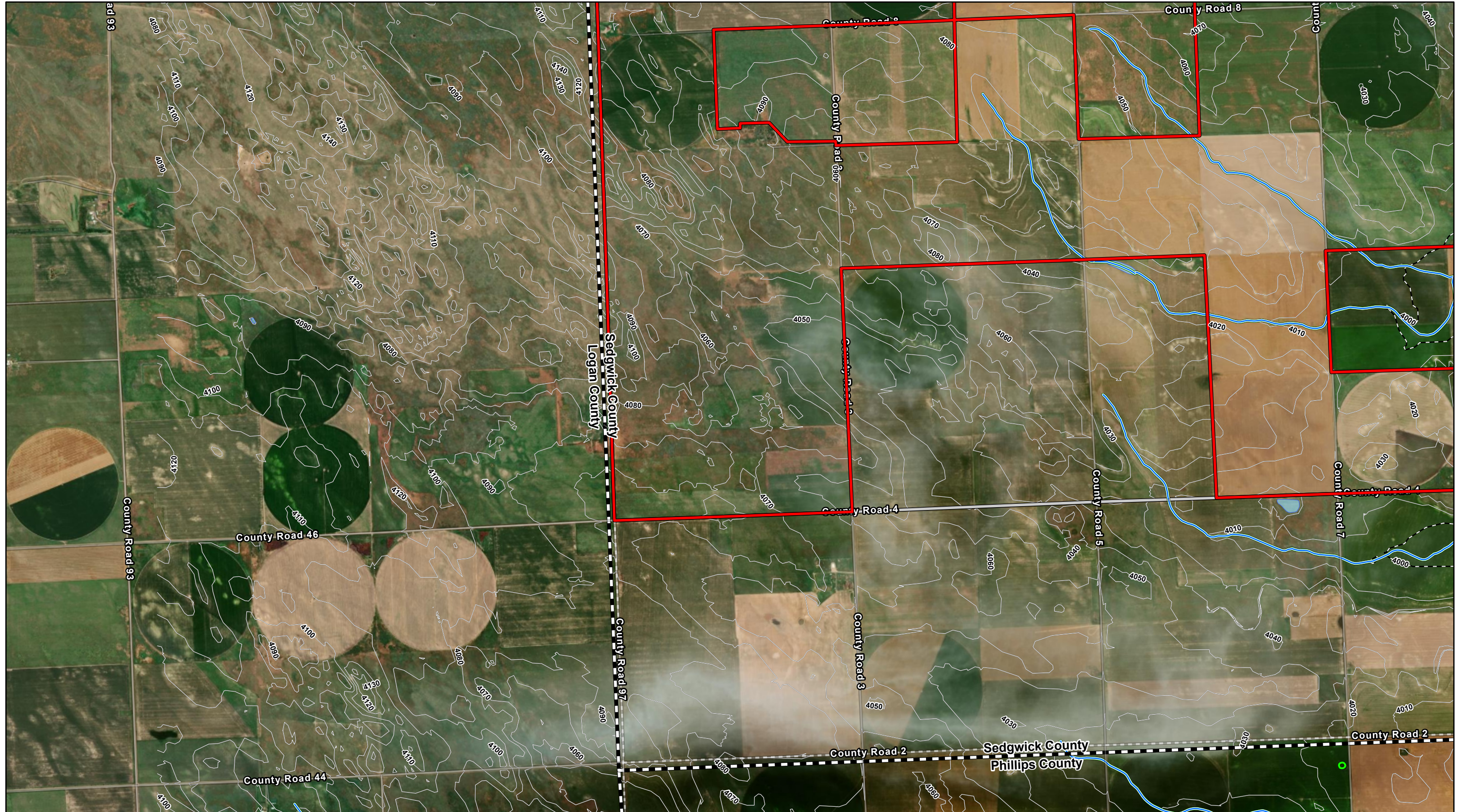
Sedgwick County, Colorado



Water Resources Overview Map

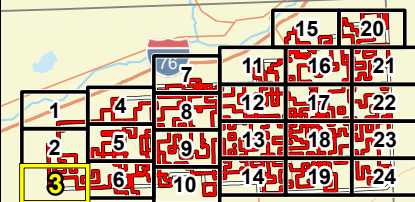
Westwood
Toll Free (888) 937-5150 westwoodps.com

Westwood Professional Services, Inc.



Data Source(s): Westwood (2024); ESRI WMS World Imagery & World Streets Basemaps (Accessed 2024), NHD (2022), NWI (2022), FEMA (2022), USGS 3DEP (2022).

Westwood
Toll Free (888) 937-5150 westwoodps.com
Westwood Professional Services, Inc.



Legend

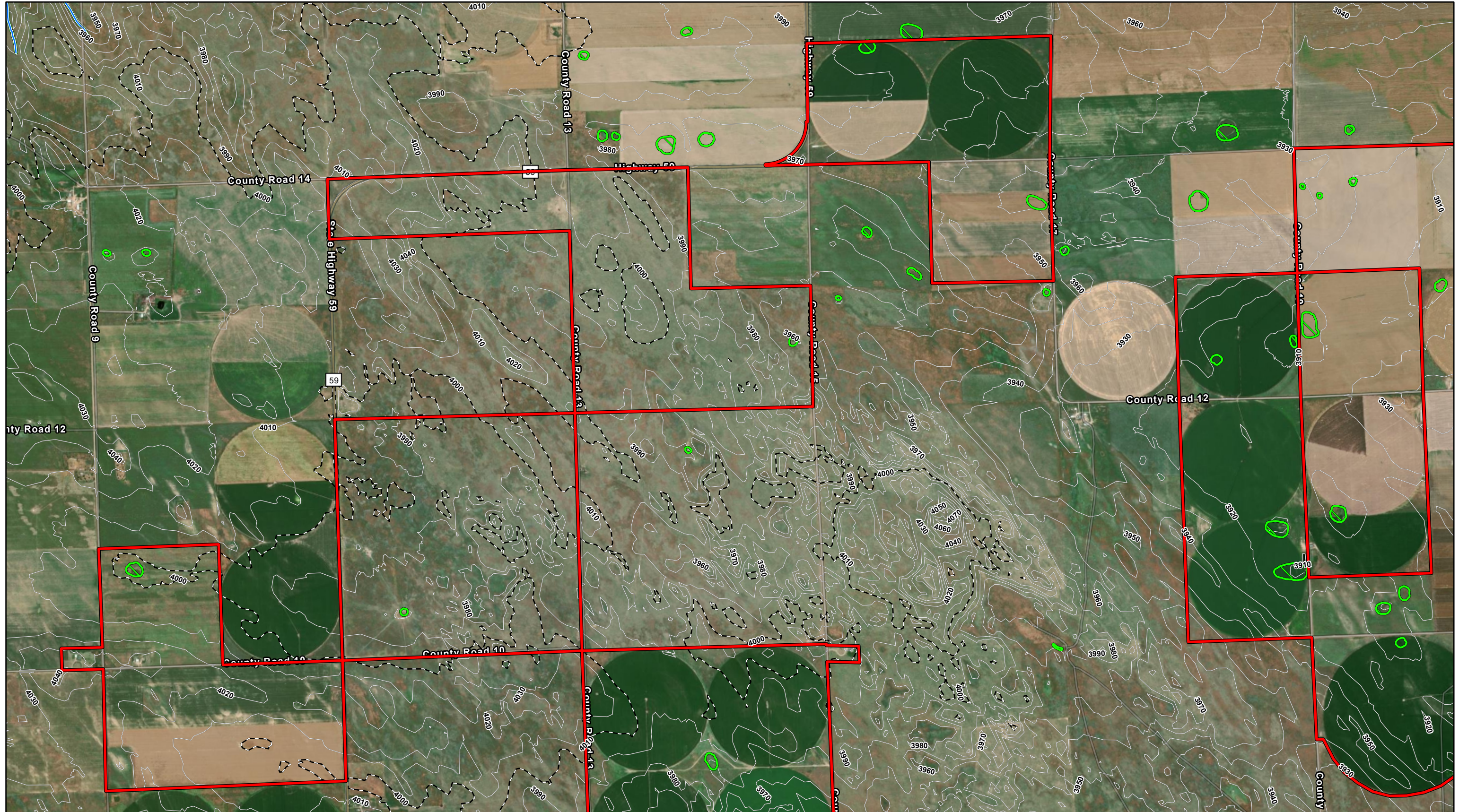
- Site Boundary
- Studied Area
- County Boundary
- NHD Flowline
- NWI Wetland
- NHD Waterbody
- 50 ft Contour
- 10 ft Contour
- 100-Year Floodplain
- Floodway

Overland Pass Energy East Wind Project

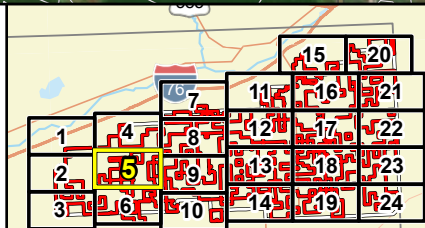
Sedgwick County, Colorado

Water Resources Map Series





Data Source(s): Westwood (2024); ESRI WMS World Imagery & World Streets Basemaps (Accessed 2024), NHD (2022), NWI (2022), FEMA (2022), USGS 3DEP (2022).



Legend

- Site Boundary
- NWI Wetland
- 100-Year Floodplain
- Studied Area
- NHD Waterbody
- Floodway
- County Boundary
- 50 ft Contour
- 10 ft Contour
- NHD Flowline

Overland Pass Energy East Wind Project

Sedgwick County, Colorado

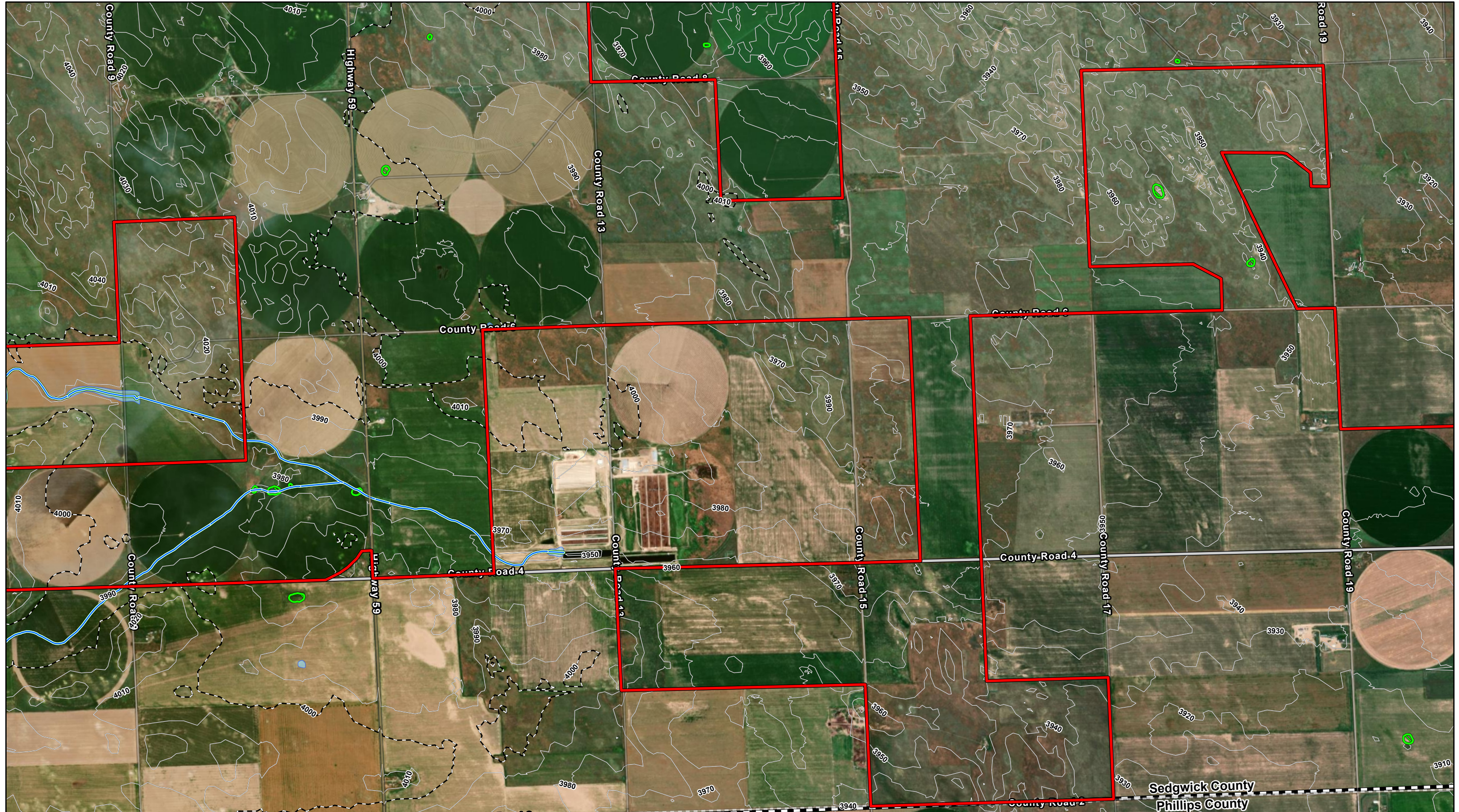
Water Resources Map Series



Westwood

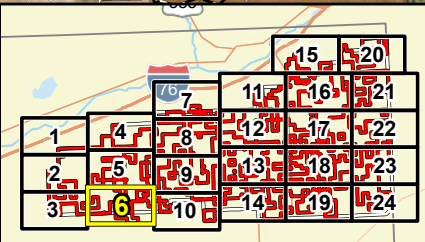
Toll Free (888) 937-5150 westwoodps.com
Westwood Professional Services, Inc.

Map Document: N:\0034228.00_GIS_ArcPro\0034228_040_Permits\Exhibits_230201\150034228_040_Permits\Exhibits_230201.aprx 6/27/2024 2:40 PM radevito



Data Source(s): Westwood (2024); ESRI WMS World Imagery & World Streets Basemaps (Accessed 2024), NHD (2022), NWI (2022), FEMA (2022), USGS 3DEP (2022).

Westwood
Toll Free (888) 937-5150 westwoodps.com
Westwood Professional Services, Inc.



Legend

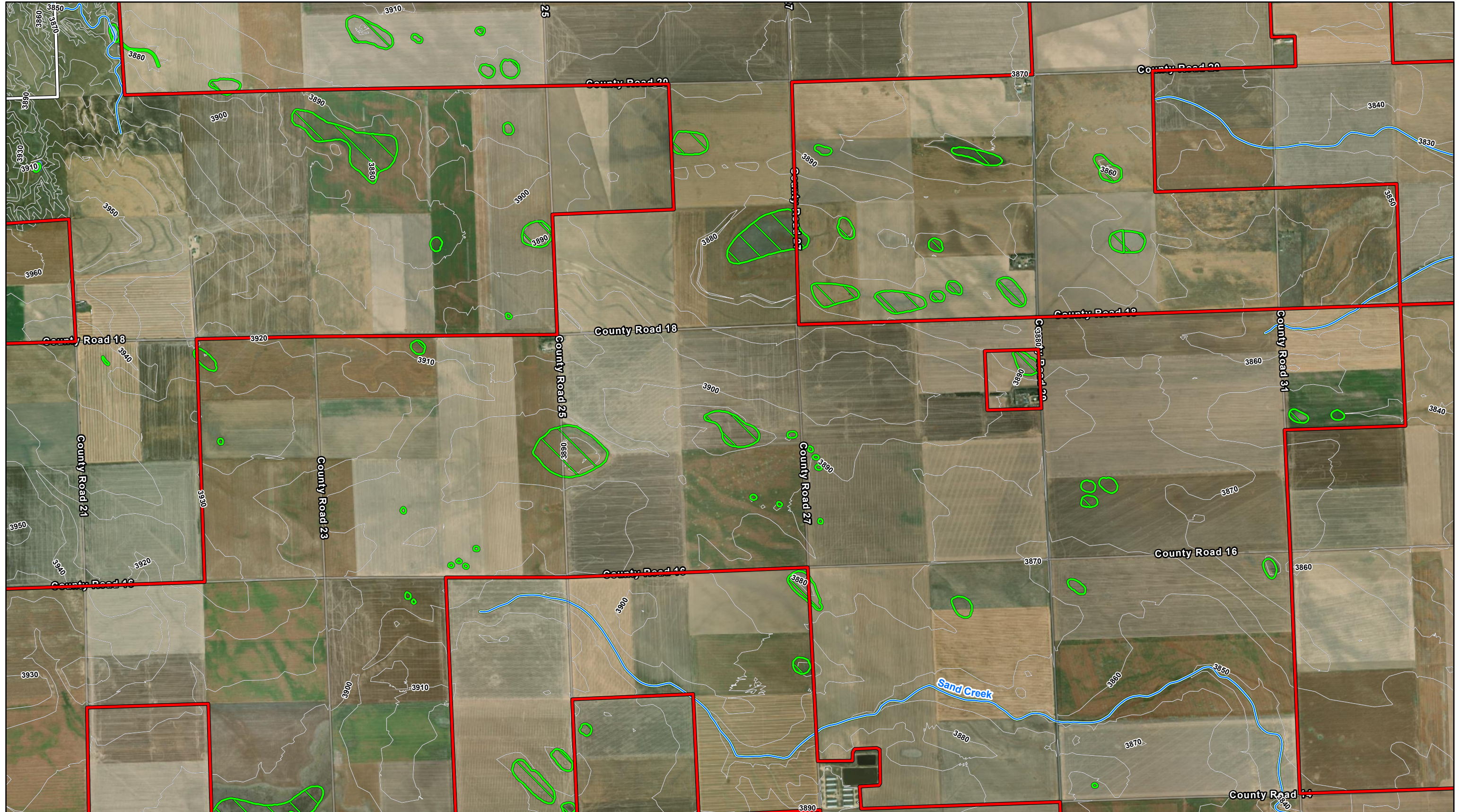
- Site Boundary
- Studied Area
- County Boundary
- NHD Flowline
- NWI Wetland
- NHD Waterbody
- 50 ft Contour
- 10 ft Contour
- 100-Year Floodplain
- Floodway

Overland Pass Energy East Wind Project

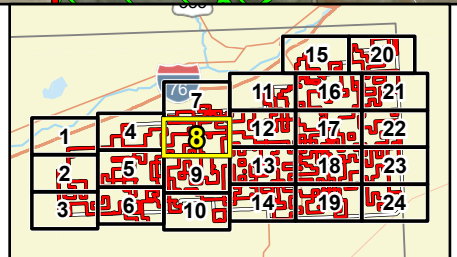
Sedgwick County, Colorado



Water Resources Map Series



Data Source(s): Westwood (2024); ESRI WMS World Imagery & World Streets Basemaps (Accessed 2024), NHD (2022), NWI (2022), FEMA (2022), USGS 3DEP (2022).



- Legend**
- Site Boundary
 - Studied Area
 - County Boundary
 - NHD Flowline
 - NWI Wetland
 - NHD Waterbody
 - 50 ft Contour
 - 10 ft Contour
 - 100-Year Floodplain
 - Floodway

Overland Pass Energy East Wind Project

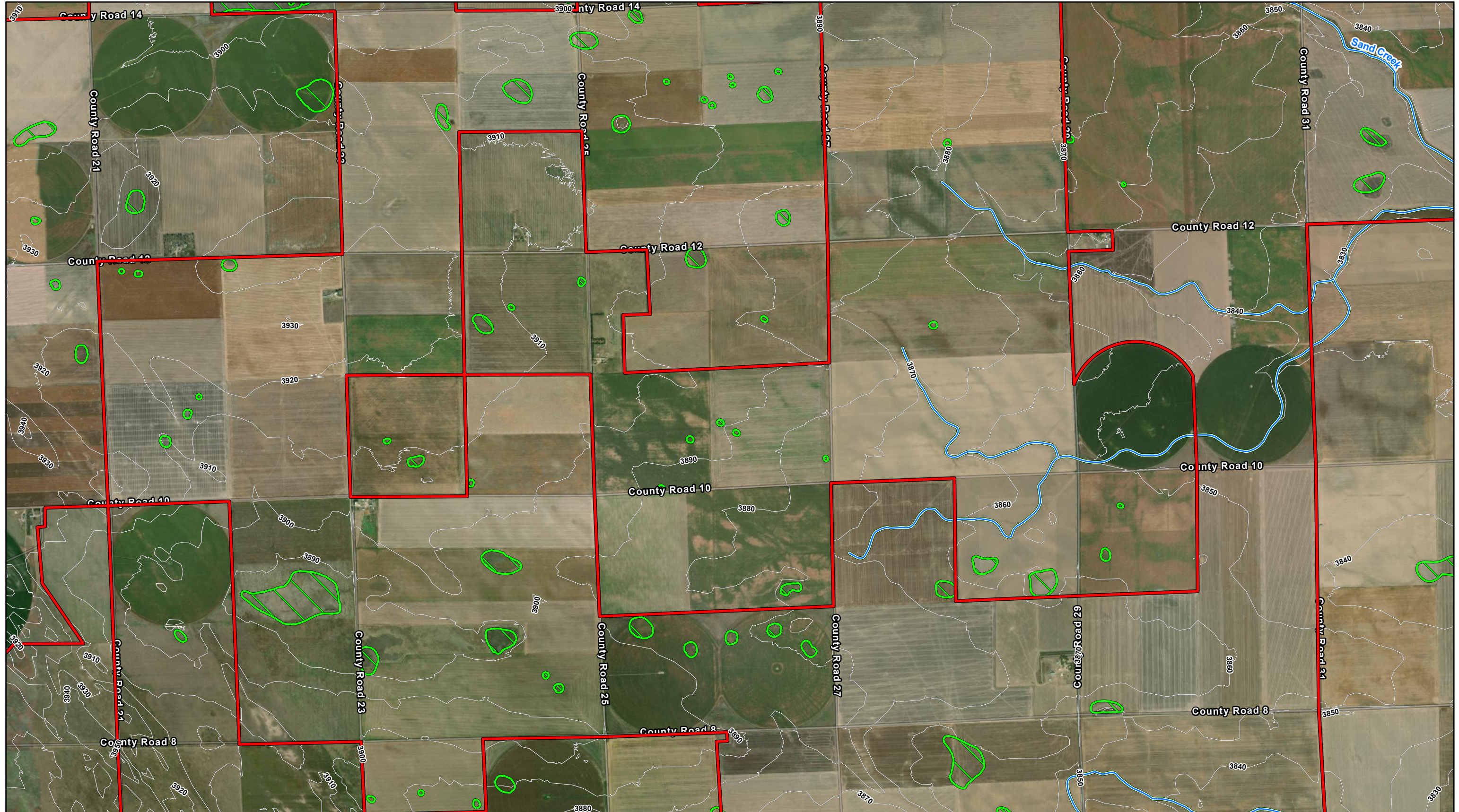
Sedgwick County, Colorado

Water Resources Map Series



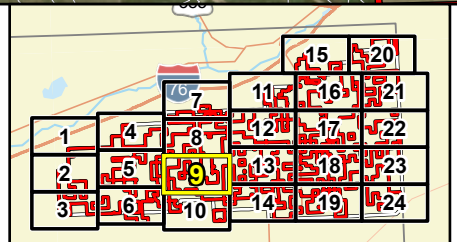
Westwood
Toll Free (888) 937-5150 westwoodps.com
Westwood Professional Services, Inc.

Map Document: N:\0034228_00_GIS_ArcPro\0034228_040_Permits\Exhibits_230201\100034228_040_Permits\Exhibits_230201.aprx 6/27/2024 2:40 PM radevito



Data Source(s): Westwood (2024); ESRI WMS World Imagery & World Streets Basemaps (Accessed 2024), NHD (2022), NWI (2022), FEMA (2022), USGS 3DEP (2022).

Westwood
Toll Free (888) 937-5150 westwoodps.com
Westwood Professional Services, Inc.



Legend

Site Boundary	NWI Wetland	100-Year Floodplain
Studied Area	NHD Waterbody	Floodway
County Boundary	50 ft Contour	
NHD Flowline	10 ft Contour	

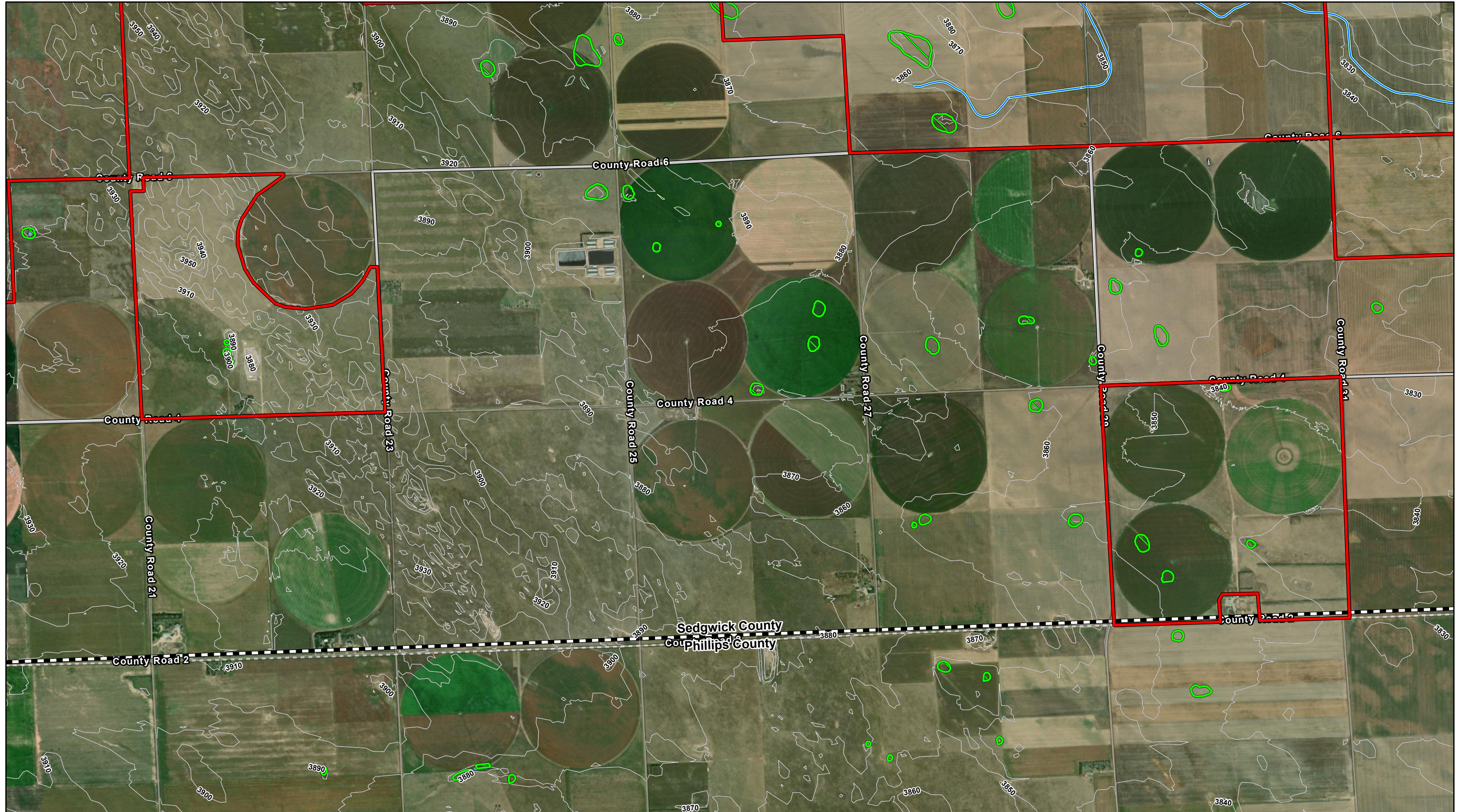
Overland Pass Energy East Wind Project

Sedgwick County, Colorado

Water Resources Map Series

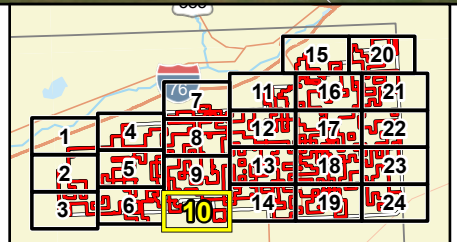


Map Document: N:\0034228_00_GIS_ArcPro\0034228_040_Permits\Exhibits_230201\150034228_040_Permits\Exhibits_230201.aprx 6/27/2024 2:40 PM ralewlv



Data Source(s): Westwood (2024); ESRI WMS World Imagery & World Streets Basemaps (Accessed 2024), NHD (2022), NWI (2022), FEMA (2022), USGS 3DEP (2022).

Westwood
Toll Free (888) 937-5150 westwoodps.com
Westwood Professional Services, Inc.



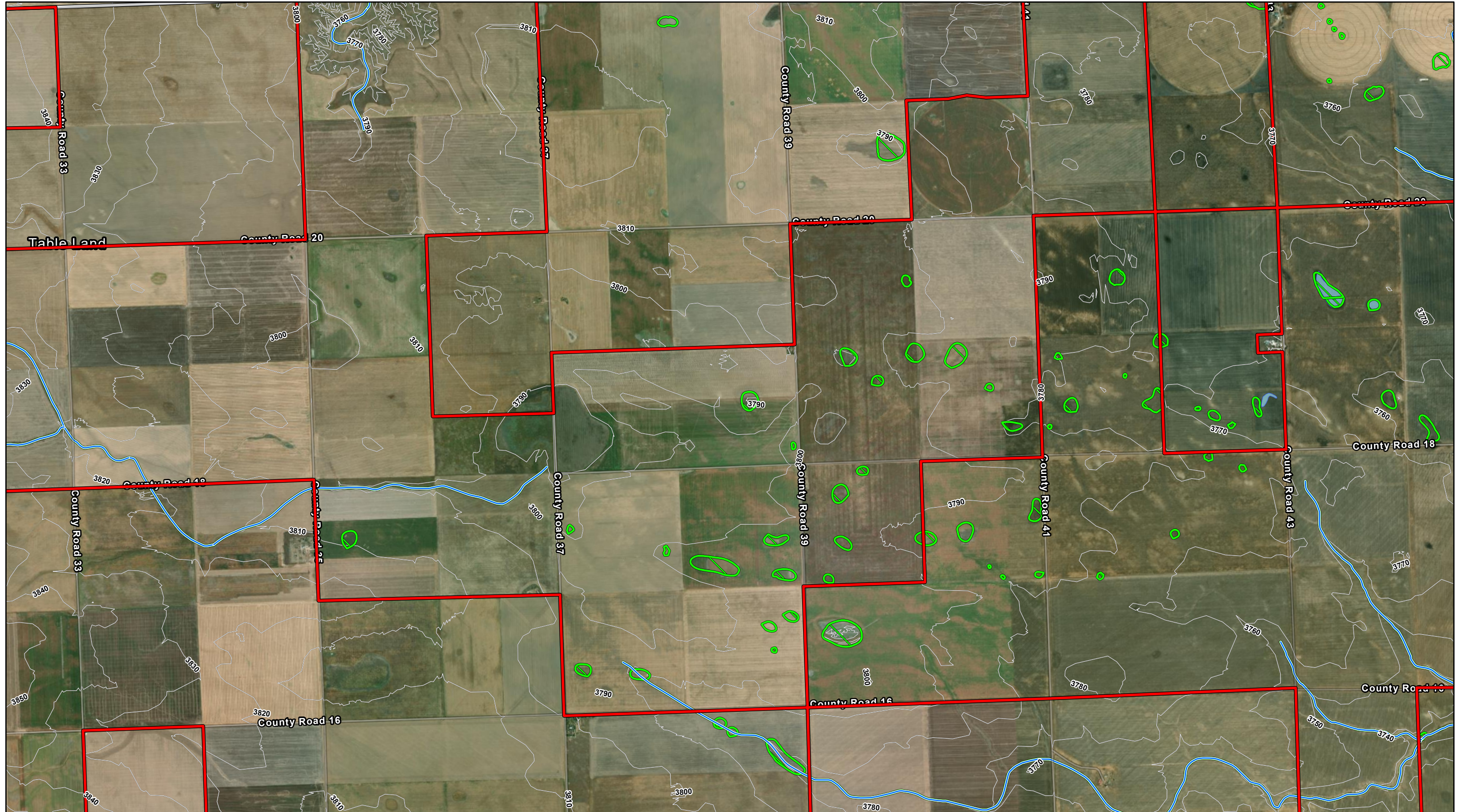
- Legend**
- Site Boundary
 - Studied Area
 - County Boundary
 - NHD Flowline
 - NWI Wetland
 - NHD Waterbody
 - 50 ft Contour
 - 10 ft Contour
 - 100-Year Floodplain
 - Floodway

Overland Pass Energy East Wind Project

Sedgwick County, Colorado

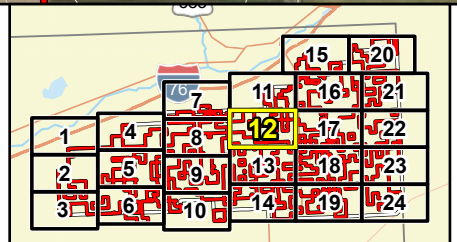


Water Resources Map Series



Data Source(s): Westwood (2024); ESRI WMS World Imagery & World Streets Basemaps (Accessed 2024), NHD (2022), NWI (2022), FEMA (2022), USGS 3DEP (2022).

Westwood
Toll Free (888) 937-5150 westwoodps.com
Westwood Professional Services, Inc.



- Legend**
- Site Boundary
 - NWI Wetland
 - 100-Year Floodplain
 - Studied Area
 - NHD Waterbody
 - Floodway
 - County Boundary
 - 50 ft Contour
 - NHD Flowline
 - 10 ft Contour

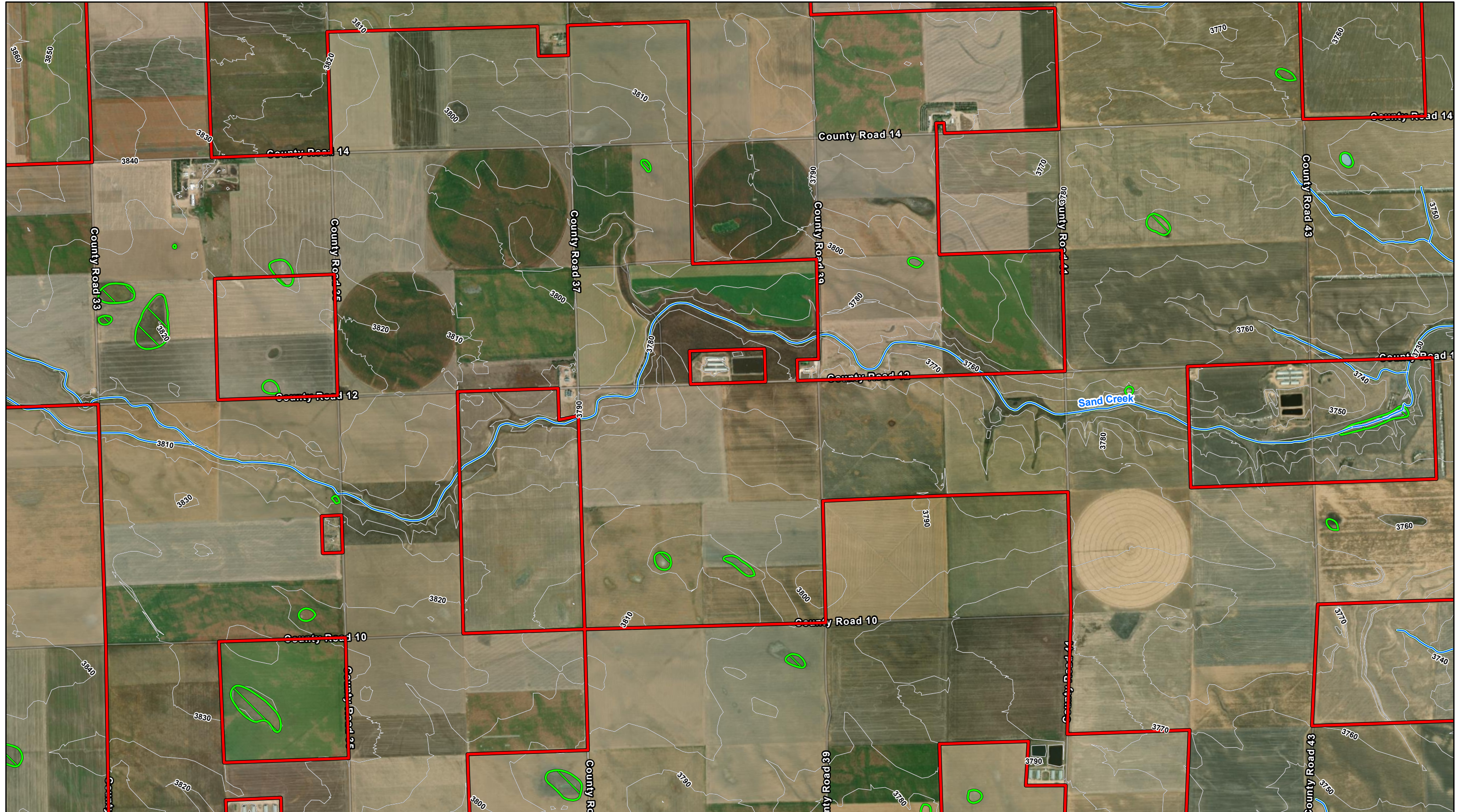
Overland Pass Energy East Wind Project

Sedgwick County, Colorado

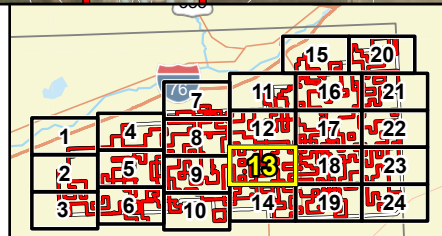
Water Resources Map Series



Map Document: N:\0034228_00_GIS_ArcPro\0034228_040_Permits\Exhibits_230201\10034228_040_Permits\Exhibits_230201.aprx 6/27/2024 2:41 PM radevito



Data Source(s): Westwood (2024); ESRI WMS World Imagery & World Streets Basemaps (Accessed 2024), NHD (2022), NWI (2022), FEMA (2022), USGS 3DEP (2022).



- Legend**
- Site Boundary
 - Studied Area
 - County Boundary
 - NHD Flowline
 - NWI Wetland
 - NHD Waterbody
 - 50 ft Contour
 - 10 ft Contour
 - 100-Year Floodplain
 - Floodway

Overland Pass Energy East Wind Project

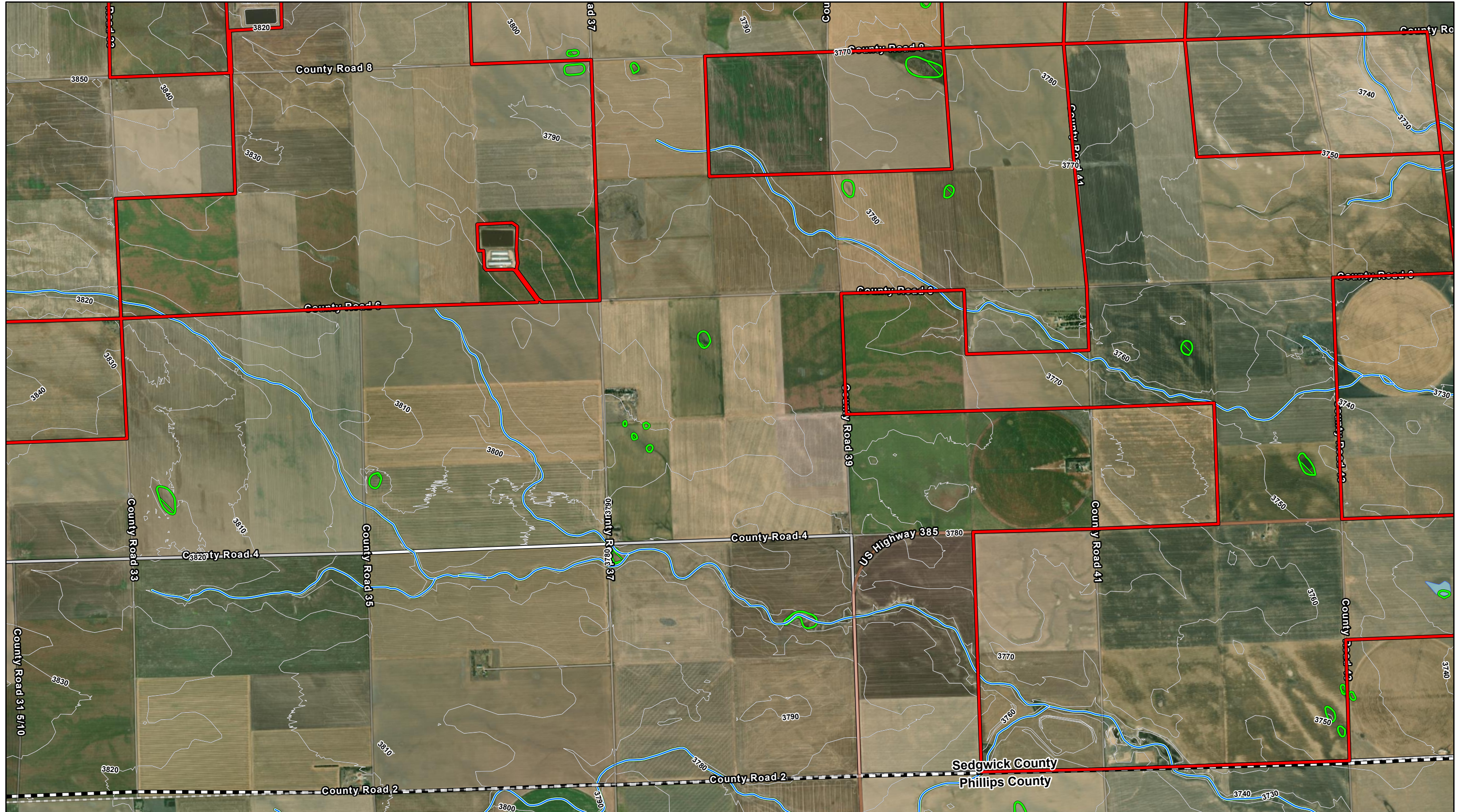
Sedgwick County, Colorado

Water Resources Map Series

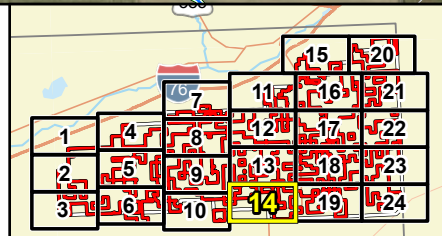


Westwood
Toll Free (888) 937-5150 westwoodps.com
Westwood Professional Services, Inc.

Map Document: N:\0034226_00_GIS_ArcPro\0034226_040_Permits\Exhibits_230201\10034226_040_Permits\Exhibits_230201.aprx 6/27/2024 2:41 PM radevito



Data Source(s): Westwood (2024); ESRI WMS World Imagery & World Streets Basemaps (Accessed 2024), NHD (2022), NWI (2022), FEMA (2022), USGS 3DEP (2022).



- Legend**
- Site Boundary
 - NWI Wetland
 - 100-Year Floodplain
 - Studied Area
 - NHD Waterbody
 - 50 ft Contour
 - 10 ft Contour
 - County Boundary
 - NHD Flowline
 - Floodway

Overland Pass Energy East Wind Project

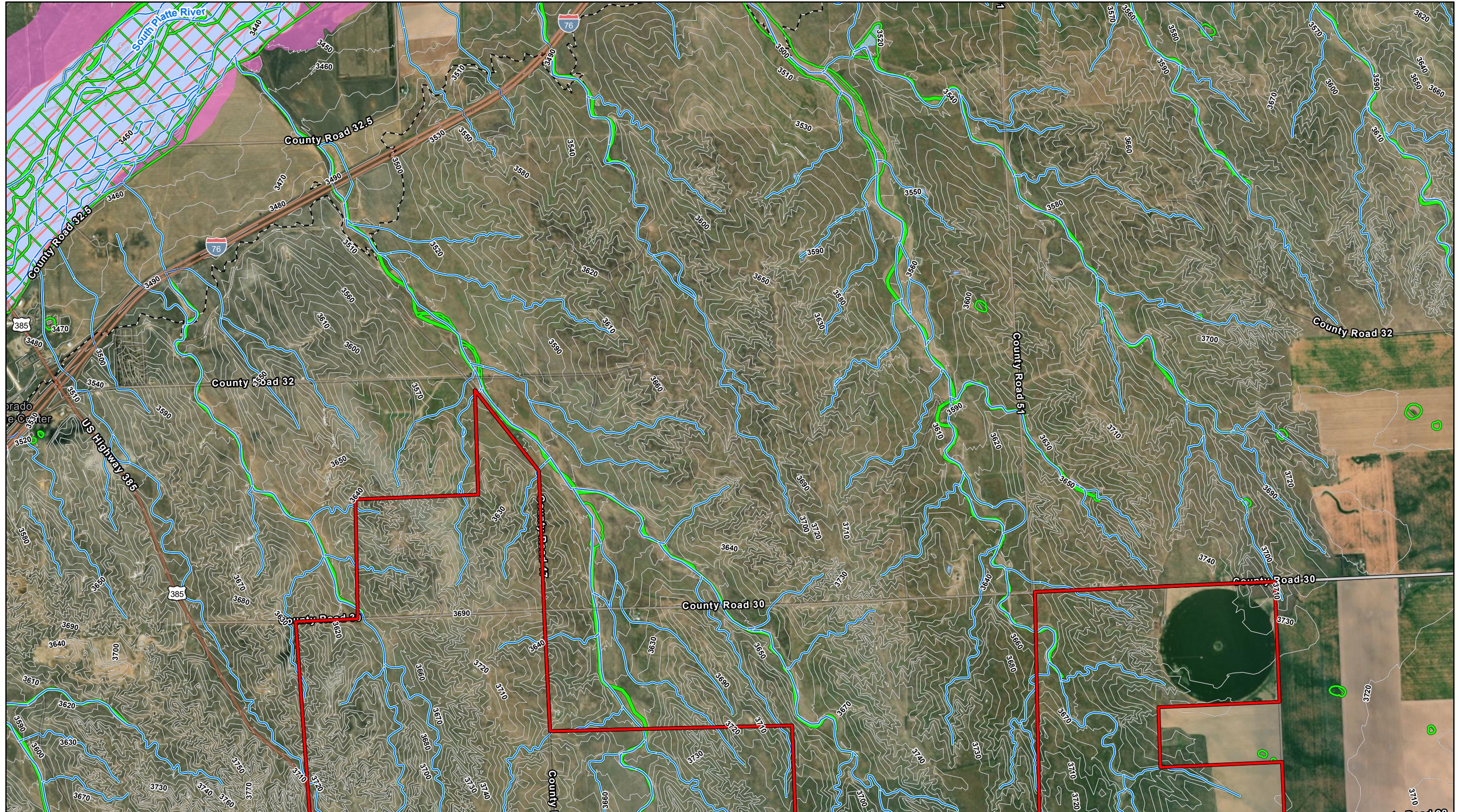
Sedgwick County, Colorado

Water Resources Map Series

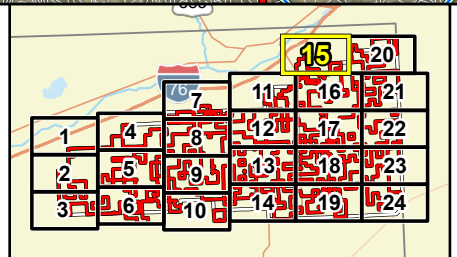


Westwood
Toll Free (888) 937-5150 westwoodps.com
Westwood Professional Services, Inc.

Map Document: N:\0034226_00_GIS_ArcPro\0034226_040_PermitExhibits_230201\F0034226_040_PermitExhibits_230201.aprx 6/27/2024 2:41 PM radevito



Data Source(s): Westwood (2024); ESRI WMS World Imagery & World Streets Basemaps (Accessed 2024), NHD (2022), NWI (2022), FEMA (2022), USGS 3DEP (2022).



- Legend**
- Site Boundary
 - Studied Area
 - County Boundary
 - NHD Flowline
 - NWI Wetland
 - NHD Waterbody
 - 50 ft Contour
 - 10 ft Contour
 - 100-Year Floodplain
 - Floodway

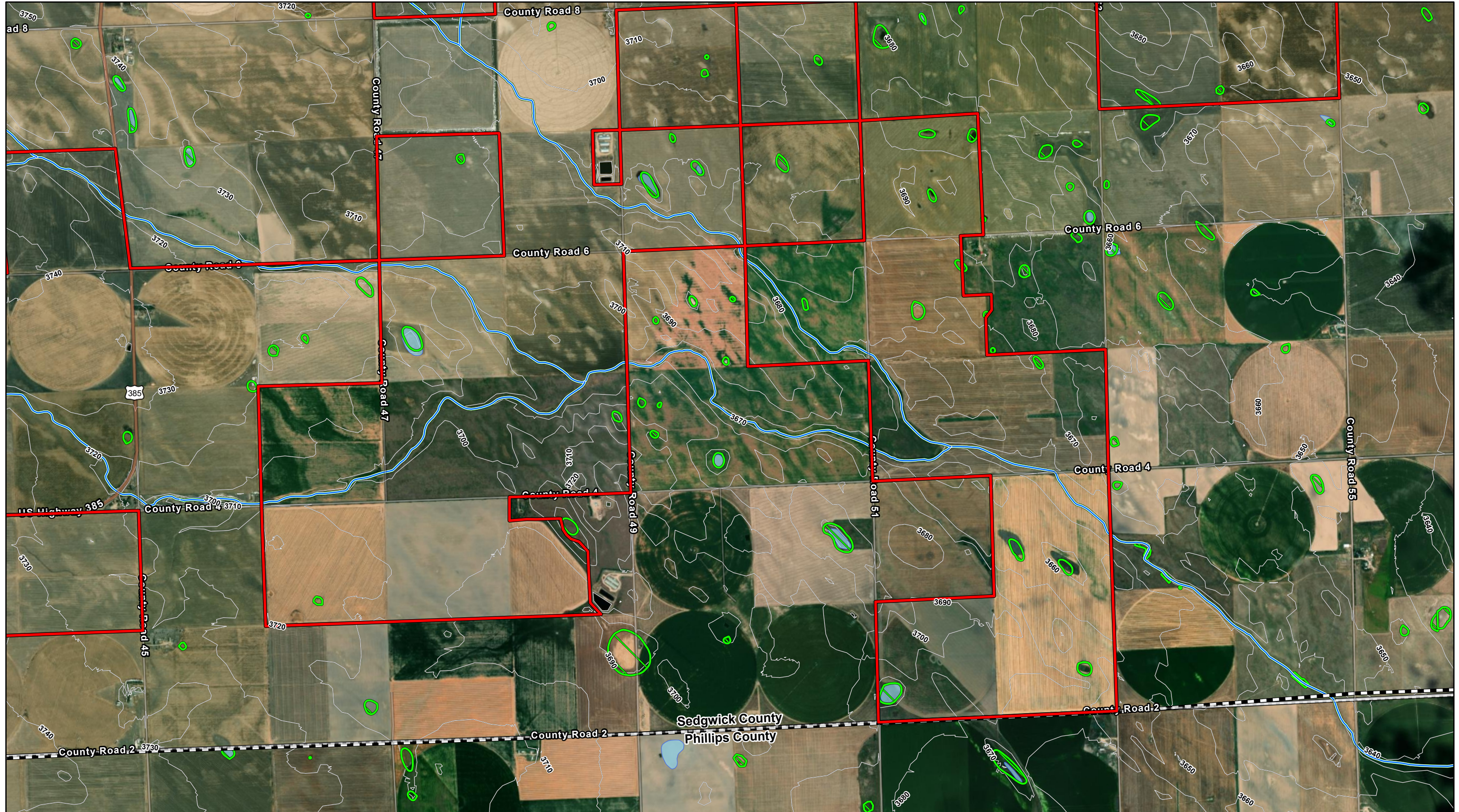
Overland Pass Energy East Wind Project

Sedgwick County, Colorado



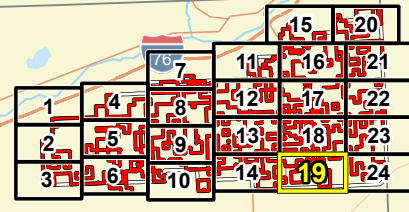
Water Resources Map Series

Westwood
Toll Free (888) 937-5150 westwoodps.com
Westwood Professional Services, Inc.



Data Source(s): Westwood (2024); ESRI WMS World Imagery & World Streets Basemaps (Accessed 2024), NHD (2022), NWI (2022), FEMA (2022), USGS 3DEP (2022).

Westwood
Toll Free (888) 937-5150 westwoodps.com
Westwood Professional Services, Inc.



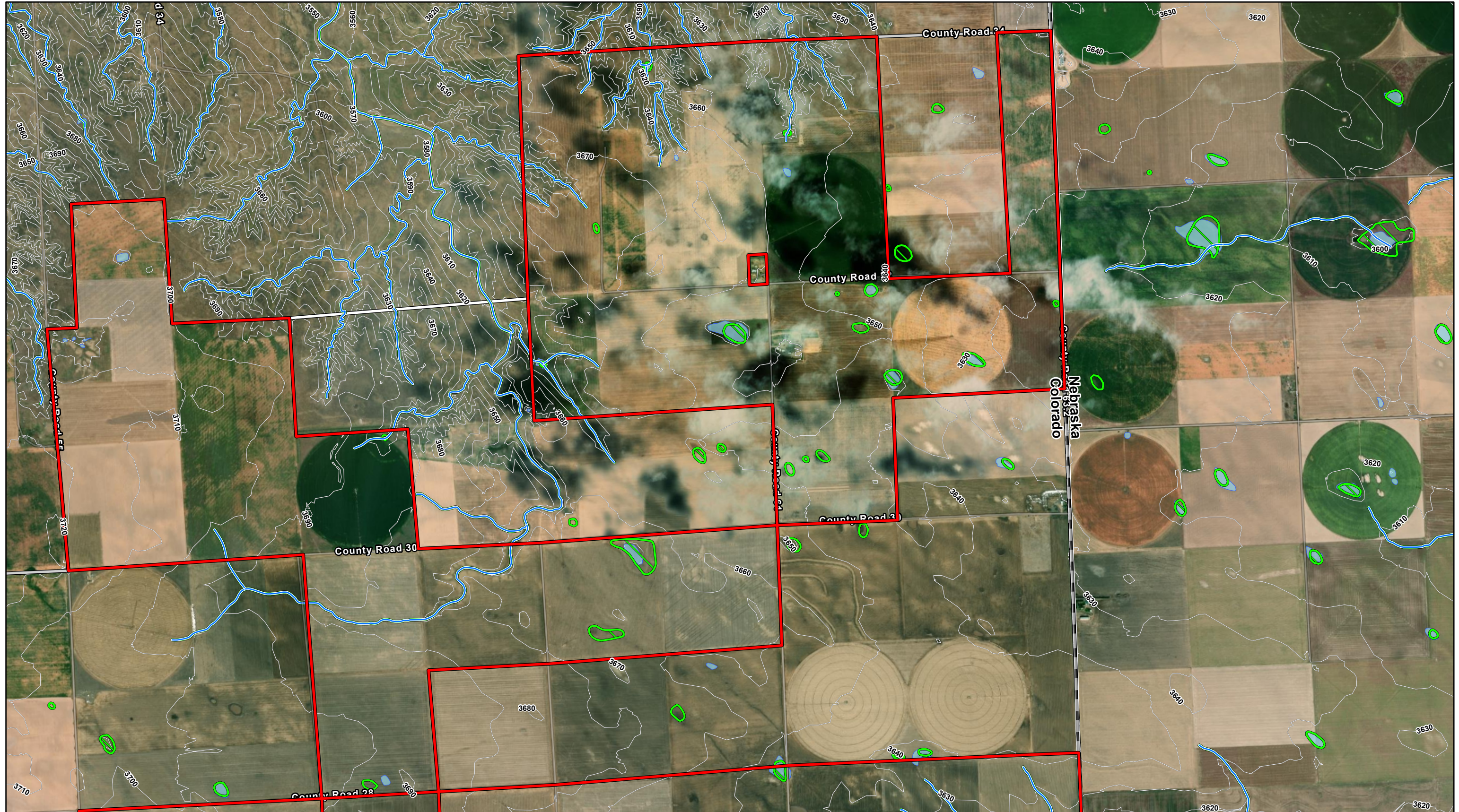
- Legend**
- Site Boundary
 - NWI Wetland
 - 100-Year Floodplain
 - Studied Area
 - NHD Waterbody
 - 50 ft Contour
 - 10 ft Contour
 - County Boundary
 - Floodway
 - NHD Flowline

Overland Pass Energy East Wind Project

Sedgwick County, Colorado

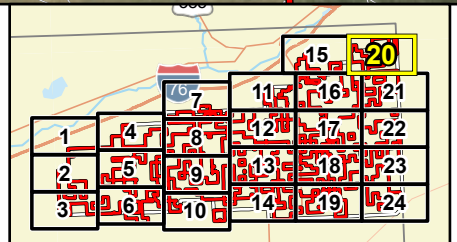
Water Resources Map Series





Data Source(s): Westwood (2024); ESRI WMS World Imagery & World Streets Basemaps (Accessed 2024), NHD (2022), NWI (2022), FEMA (2022), USGS 3DEP (2022).

Westwood
Toll Free (888) 937-5150 westwoodps.com
Westwood Professional Services, Inc.

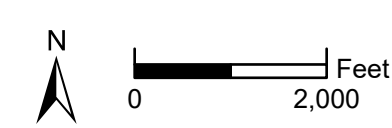


Legend

- Site Boundary
- Studied Area
- County Boundary
- NHD Flowline
- NWI Wetland
- NHD Waterbody
- 50 ft Contour
- 10 ft Contour
- 100-Year Floodplain
- Floodway

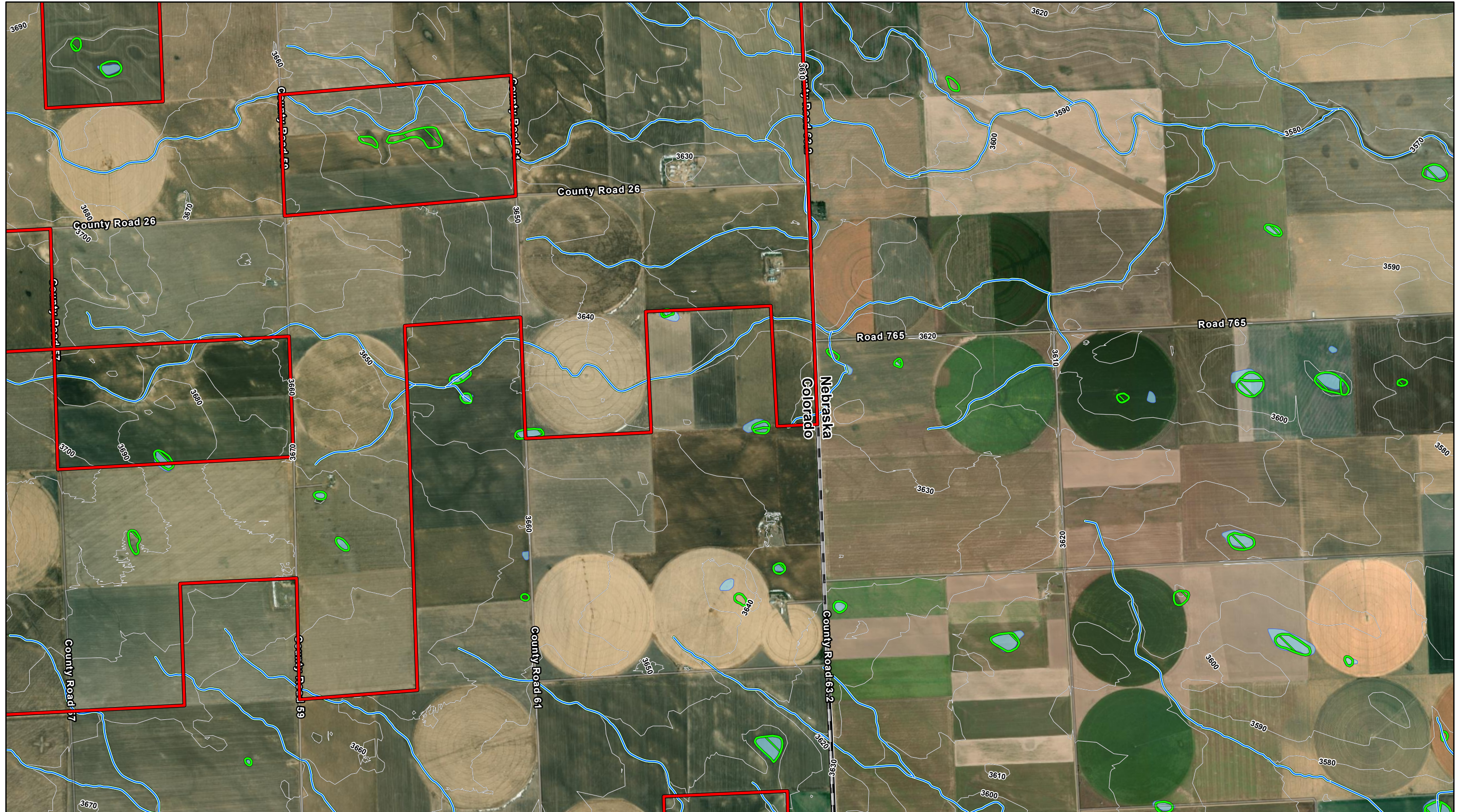
Overland Pass Energy East Wind Project

Sedgwick County, Colorado



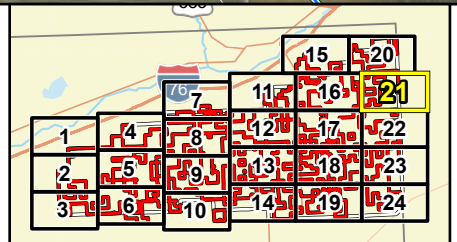
Water Resources Map Series

Map Document: N:\0034228.00_GIS_ArcPro\0034228_040_Permits\Exhibits_230201\100034228_040_Permits\Exhibits_230201.aprx 6/27/2024 2:41 PM radevito



Data Source(s): Westwood (2024); ESRI WMS World Imagery & World Streets Basemaps (Accessed 2024), NHD (2022), NWI (2022), FEMA (2022), USGS 3DEP (2022).

Westwood
Toll Free (888) 937-5150 westwoodps.com
Westwood Professional Services, Inc.

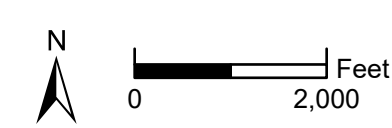


Legend

Site Boundary	NWI Wetland	100-Year Floodplain
Studied Area	NHD Waterbody	Floodway
County Boundary	50 ft Contour	
NHD Flowline	10 ft Contour	

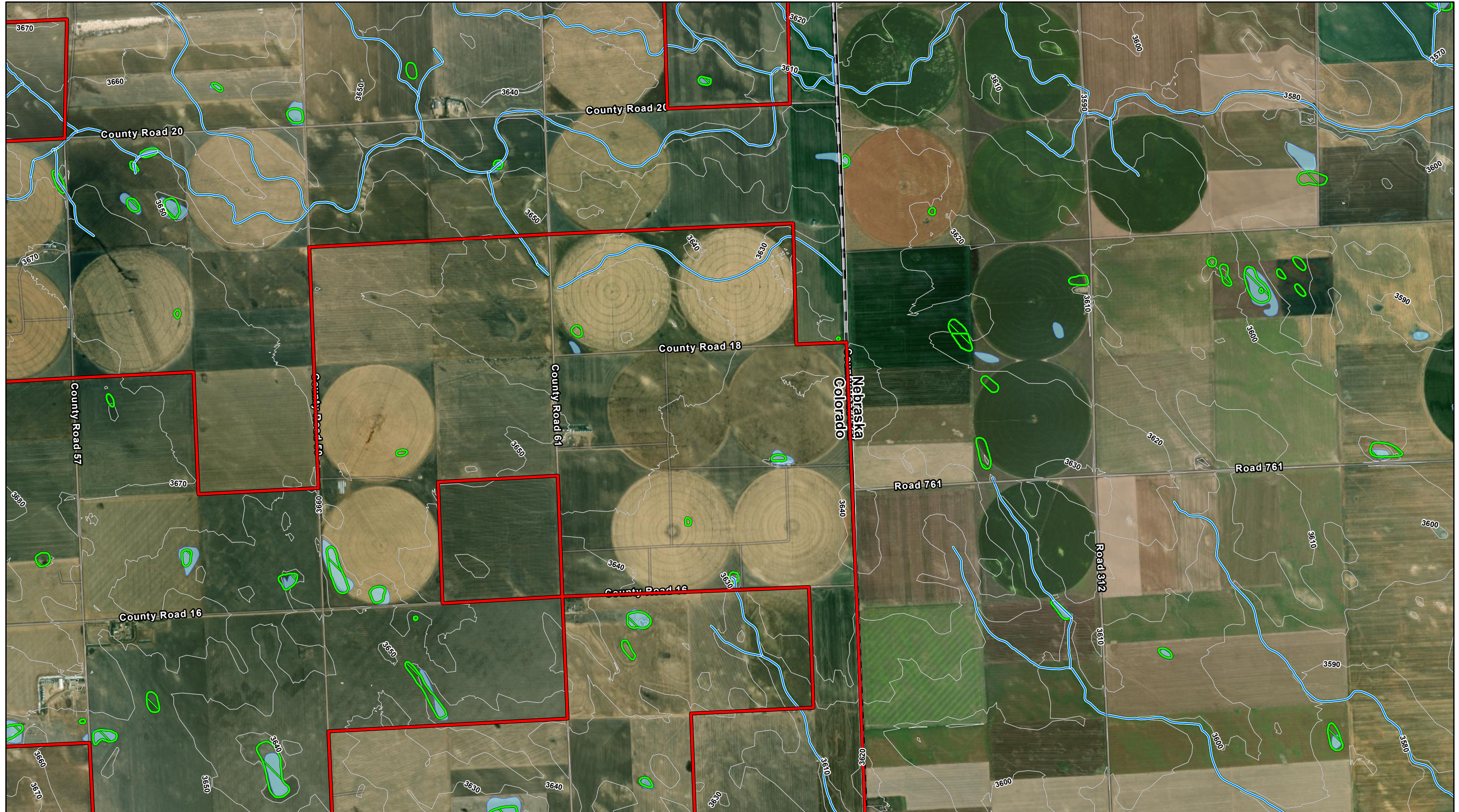
Overland Pass Energy East Wind Project

Sedgwick County, Colorado



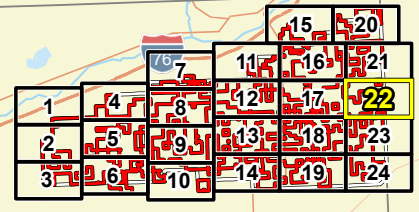
Water Resources Map Series

Map Document: N:\0034226_00_GIS_ArcPro\0034226_040_Permits\Exhibits_230201\10034226_040_Permits\Exhibits_230201.aprx 6/27/2024 2:41 PM radevito



Data Source(s): Westwood (2024); ESRI WMS World Imagery & World Streets Basemaps (Accessed 2024), NHD (2022), NWI (2022), FEMA (2022), USGS 3DEP (2022).

Westwood
Toll Free (888) 937-5150 westwoodps.com
Westwood Professional Services, Inc.



- Legend**
- Site Boundary
 - Studied Area
 - County Boundary
 - NHD Flowline
 - NWI Wetland
 - NHD Waterbody
 - 50 ft Contour
 - 10 ft Contour
 - 100-Year Floodplain
 - Floodway

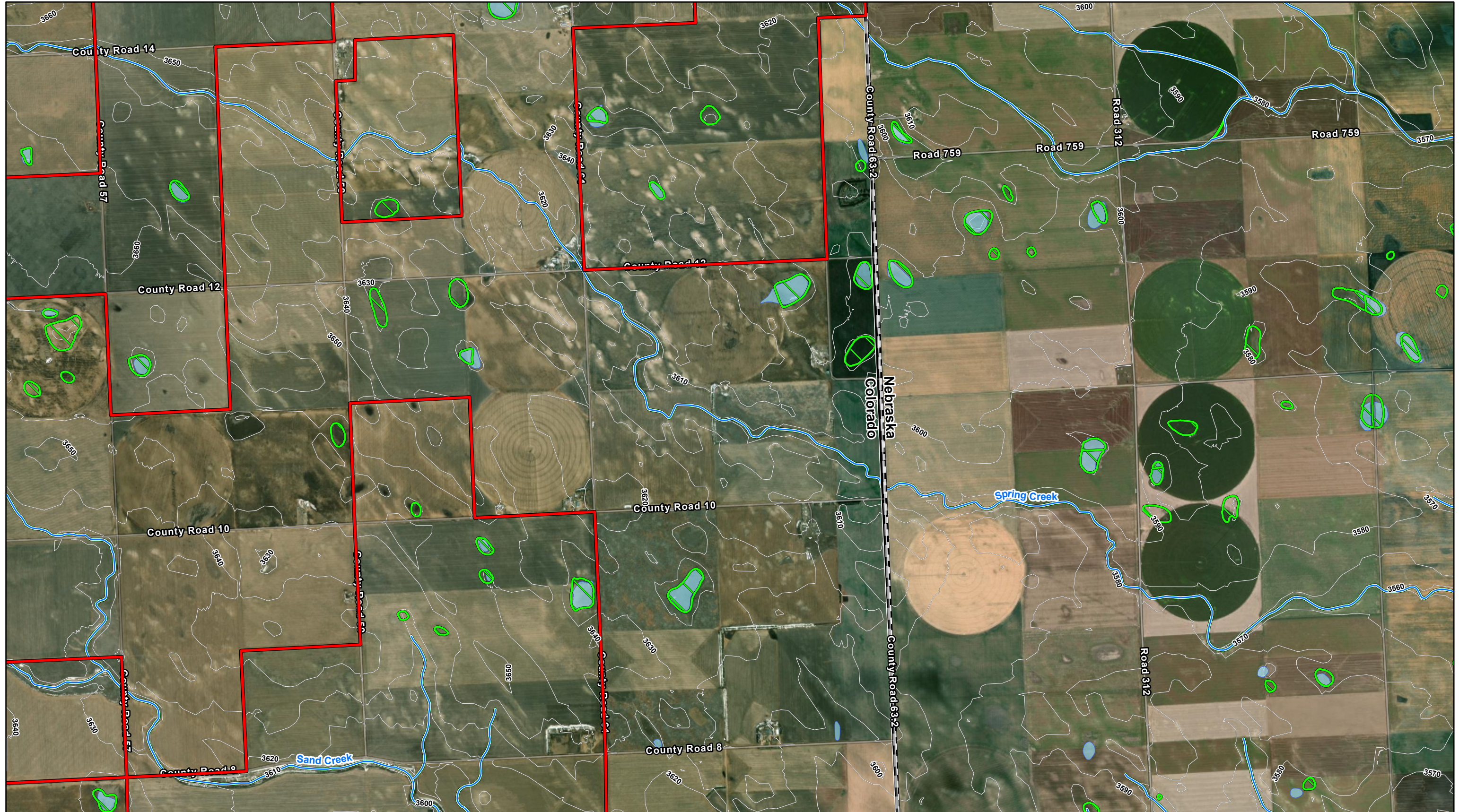
Overland Pass Energy East Wind Project

Sedgwick County, Colorado

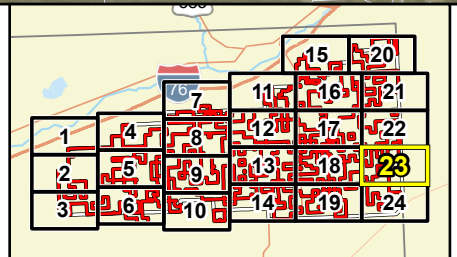


Water Resources Map Series

Map Document: N:\0034228_00_GIS_ArcPro\0034228_040_Permits\Exhibits_230201\10034228_040_Permits\Exhibits_230201.aprx 6/27/2024 2:41 PM radevito



Data Source(s): Westwood (2024); ESRI WMS World Imagery & World Streets Basemaps (Accessed 2024), NHD (2022), NWI (2022), FEMA (2022), USGS 3DEP (2022).



- Legend**
- Site Boundary
 - NWI Wetland
 - 100-Year Floodplain
 - Studied Area
 - NHD Waterbody
 - 50 ft Contour
 - 10 ft Contour
 - NHD Flowline
 - County Boundary
 - Floodway

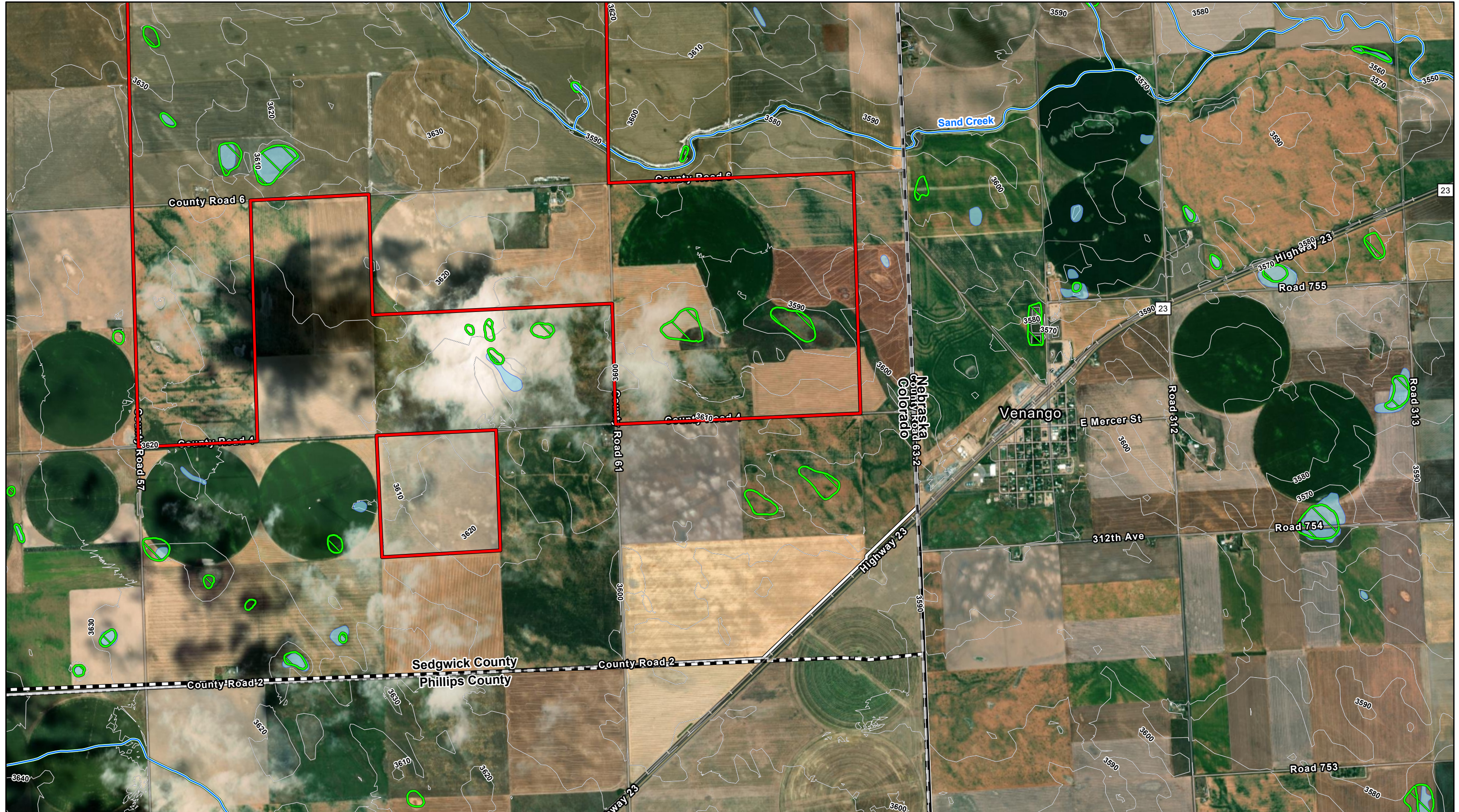
Overland Pass Energy East Wind Project

Sedgwick County, Colorado

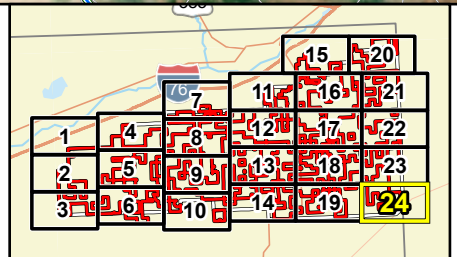
Water Resources Map Series



Westwood
Toll Free (888) 937-5150 westwoodps.com
Westwood Professional Services, Inc.



Data Source(s): Westwood (2024); ESRI WMS World Imagery & World Streets Basemaps (Accessed 2024), NHD (2022), NWI (2022), FEMA (2022), USGS 3DEP (2022).



- Legend**
- Site Boundary
 - NWI Wetland
 - 100-Year Floodplain
 - Studied Area
 - NHD Waterbody
 - Floodway
 - County Boundary
 - 50 ft Contour
 - NHD Flowline
 - 10 ft Contour

Overland Pass Energy East Wind Project

Sedgwick County, Colorado

Water Resources Map Series



Westwood
Toll Free (888) 937-5150 westwoodps.com
Westwood Professional Services, Inc.