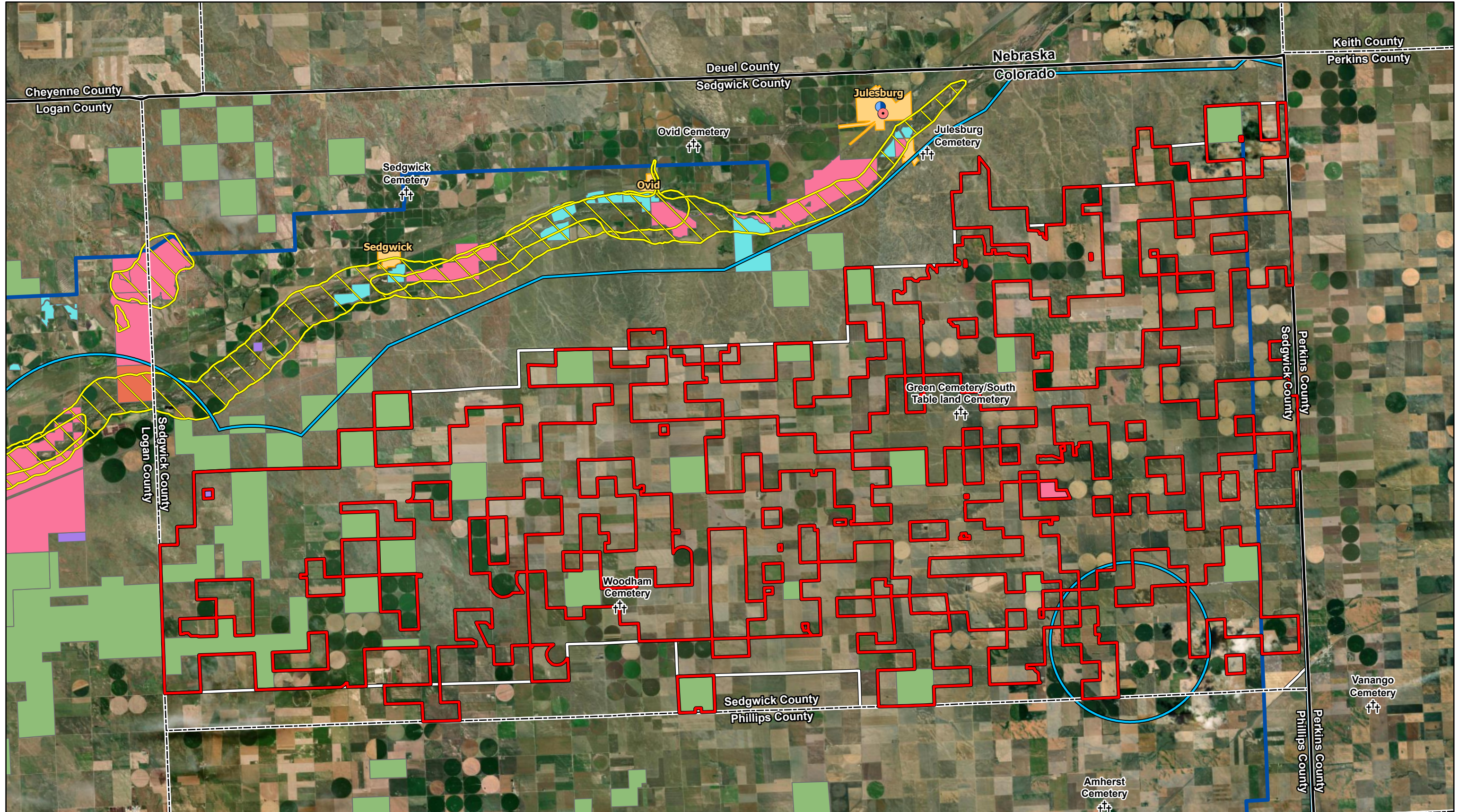


Attachment 5.03

Biological Resources and Public Lands Overview Map



Data Source(s): Westwood (2024); ESRI WMS World Imagery Basemap (Accessed 2024), PADUS (2022), USFWS (2022), NRHP (2022).

Legend

- | | | | |
|-----------------|----------------------------------|-------------------------------------|--------------------------------|
| Site Boundary | Cultural Resource Building Point | Potential Conservation Area | National Public Lands |
| Studied Area | Cemetery | North American Breeding Bird Survey | State Conservation Area |
| County Boundary | NRHP Point | PADUS Designation Type | State Recreation Area |
| State Boundary | Greater Prairie Chicken Habitat | Conservation Easement | State Resource Management Area |

Overland Pass Energy East Wind Project

Sedgwick County, Colorado



Biological Resources & Public Lands Overview Map

Map Document: N:\0034226_00_GIS_ArcPro\0034226_040_Permits\Exhibits_230201.aprx 6/27/2024 2:42 PM radevito