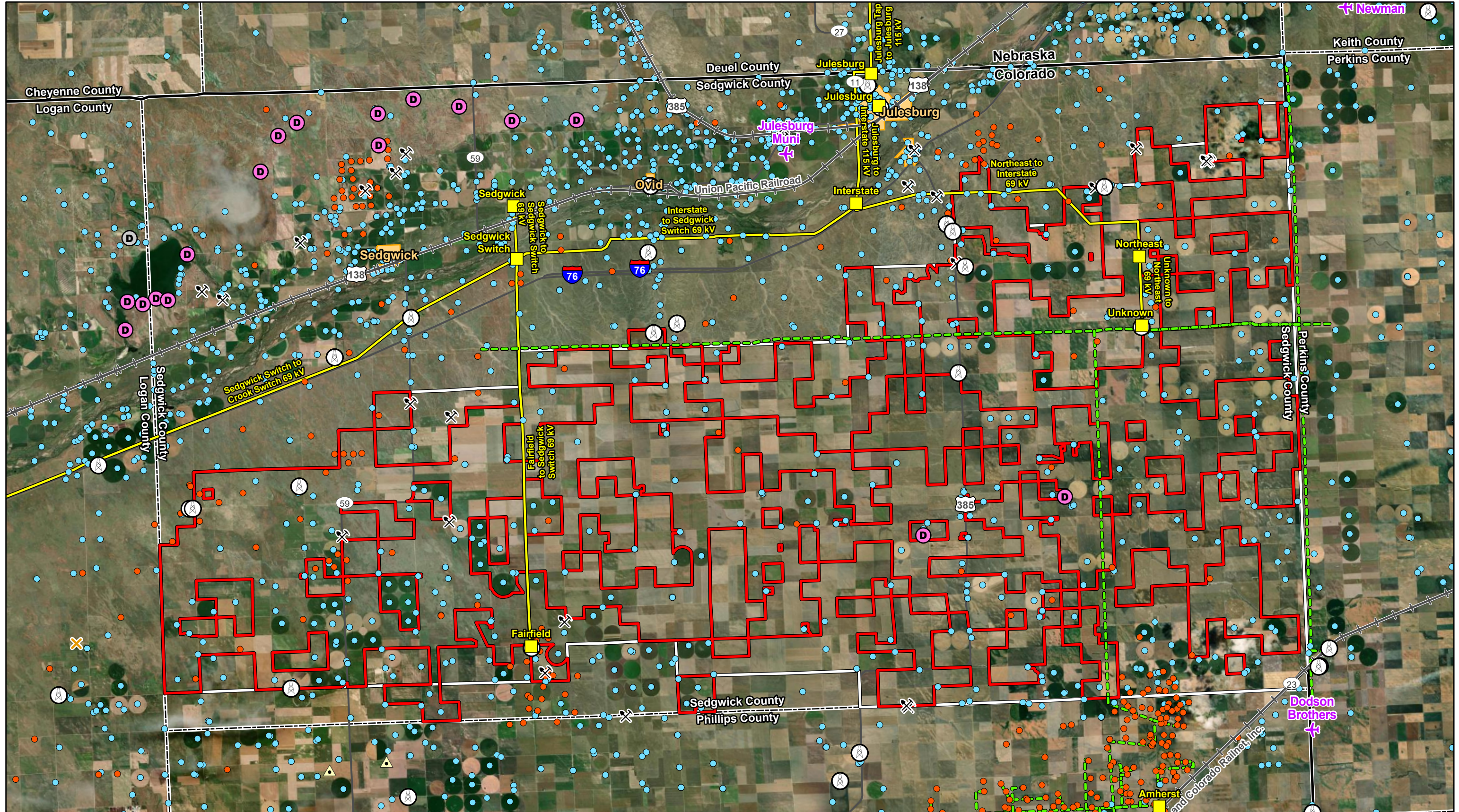


Attachment 5.04
Existing Infrastructure Map



Data Source(s): Westwood (2024); ESRI WMS World Imagery Basemap (Accessed 2024); Hitachi Velocity Suite (2022); Colorado Division of Water Resources (2022 & 2023); Colorado Oil & Gas Conservation Commission (2022); USGS (2022).

- | | | | | |
|---------------|--------------------|------------------------|----------------------|--------------------------------------|
| Site Boundary | Municipal Boundary | Airport | Oil/Gas Well | Water Well |
| Studied Area | County Boundary | Tower | Natural Gas Pipeline | Gravel Pit |
| Major Roads | State Boundary | Jurisdictional Dam | Substation | Gravel/Borrow Pit - Undifferentiated |
| Railroad | | Non-Jurisdictional Dam | Transmission Line | Borrow Pit |

Overland Pass Energy East Wind Project

Sedgwick County, Colorado

Existing Infrastructure



Westwood
Toll Free (888) 937-5150 westwoodps.com
Westwood Professional Services, Inc.